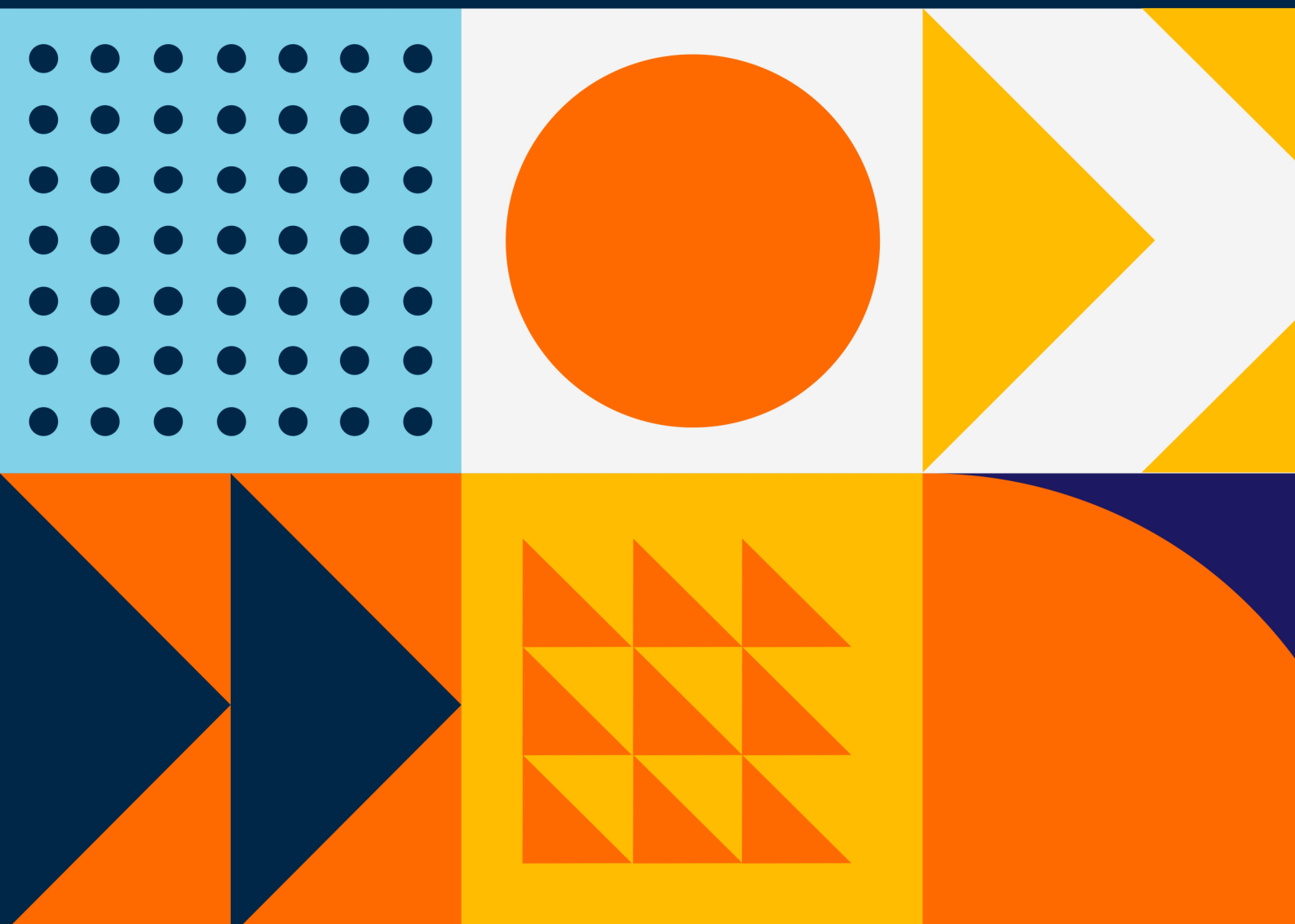




We do **IT**
to inspire.

Agile, Scrum & DevOps:

**Continuous Delivery Ecosystem
Foundation (CDEF) Certification**





About Us

who we are.

Averest is one of the leading and fast-growing companies specialising in Information Technologies, Cyber Security, Cloud Computing, DevOps, Artificial Intelligence, Agile and Scrum, and Project Management, which is based in the United Kingdom and Turkey. Averest provides high-quality tech-accredited training and business solutions to its clients on these topics and more.

Why You Should Learn With Us?

We offer accredited Programs that are available for anyone wishing to acquire skills and gain professional certification to take their career to the next level.

100+ Premium Programs

Choose the appropriate program, date and region for your occupation.

50+ World-Wide Accredited Certifications

Get certified by global certification bodies and deepen your expertise.

500+ Expert Advisors

Get together with professional trainers who are experts in their professions.

100.000+ Professionals Trained

We help many of the world's leading companies to build their tech and digital capabilities.



Our partners.



To Explore More Please Visit [Our Website](#)

Program

Continuous Delivery Ecosystem Foundation (CDEF) Certification

Overview

A continuous delivery architect is a tool-agnostic individual engaged in the design, implementation and management of DevOps deployment pipelines and toolchains that support Continuous Integration, Continuous Delivery, Continuous Testing, and, potentially, Continuous Deployment. A continuous delivery architect is also involved in defining or integrating underpinning processes, metrics, APIs and cultural considerations.

What You Will Learn?

- Appreciate Continuous Delivery vs. DevOps Continuous Integration practices
- Extend Continuous Integration to Continuous Deployment
- Architect a deployment pipeline
- Engage Ops in Continuous Delivery
- Leverage testing and security in continuous delivery
- Continuous deploy and automate release
- Consider cultural resistance to change
- Identify metrics for critical success factors, risks, and challenges
- Getting started as a CDA

Course Key Features

- Participate in unique activities designed to apply training
- Take sample documents, templates, tools and techniques with you post-training
- Access to DevOps Institute additional sources of information and communities
- Exam is included to test for certification

Eligibility

Build Engineers. Enterprise Architects. IT Managers. Maintenance and Support Staff. Operational and Infrastructure Teams. Project Managers. QA Managers.

Program

Continuous Delivery Ecosystem Foundation (CDEF) Certification

Program Outline

Module 1

- CDA Concepts
- Continuous delivery (CD) definition
- Architecting for continuous delivery
- Continuous delivery and DevOps
- Relationships between CD, Waterfall, Agile, ITIL and DevOps
- Benefits of continuous delivery

Module 3

- Design Practices for Continuous Delivery
- Why design is important to continuous delivery
- CD Architect's role in design
- Key design principles
- CD best practices
- Microservices and containers

Module 5

Module 2

- CDA Culture
- Importance of culture to the CD Architect
- What a CD Architect can do about culture
- How to maintain culture
- Assignment: DevOps culture and practices to create flow

Module 4

- Continuous Integration
- Continuous integration (CI) defined
- CD Architect's role in CI
- Importance of CI
- Benefits of CI
- CI best practices
- Assignment: Optimizing CI workflows

Module 6

Program

Continuous Delivery Ecosystem Foundation (CDEF) Certification

- Continuous Testing
- Continuous testing (CT) defined
- Importance of CT
- Benefits of CT
- CD Architect's role in CT
- Five tenets of CT
- CT best practices
- Assignment: Handling environment inconsistencies
- Continuous Delivery and Deployment
- Continuous delivery defined
- Continuous deployment defined
- Benefits of continuous delivery and deployment
- CD Architect's role in continuous delivery and deployment
- Continuous delivery and deployment best practices
- Assignment: Distinguishing continuous delivery and deployment

Module 7

- Continuous Monitoring
- Continuous monitoring defined
- Importance of continuous monitoring
- CD Architect's role in continuous monitoring
- Continuous monitoring best practices
- Assignment: Monitoring build progress

Program

Continuous Delivery Ecosystem Foundation (CDEF) Certification

Program Schedule



LONDON

71-75 Shelton Street Covent Garden

London, United Kingdom WC2H 9JQ

+44 20 3967 83 79

ISTANBUL

Merkez Mah. Abide-i Hürriyet Cad. Blackout A Blok Kat:1

No:64 Sisli, Istanbul, Turkey 34381

+90 534 551 20 88

info@averesttraining.com