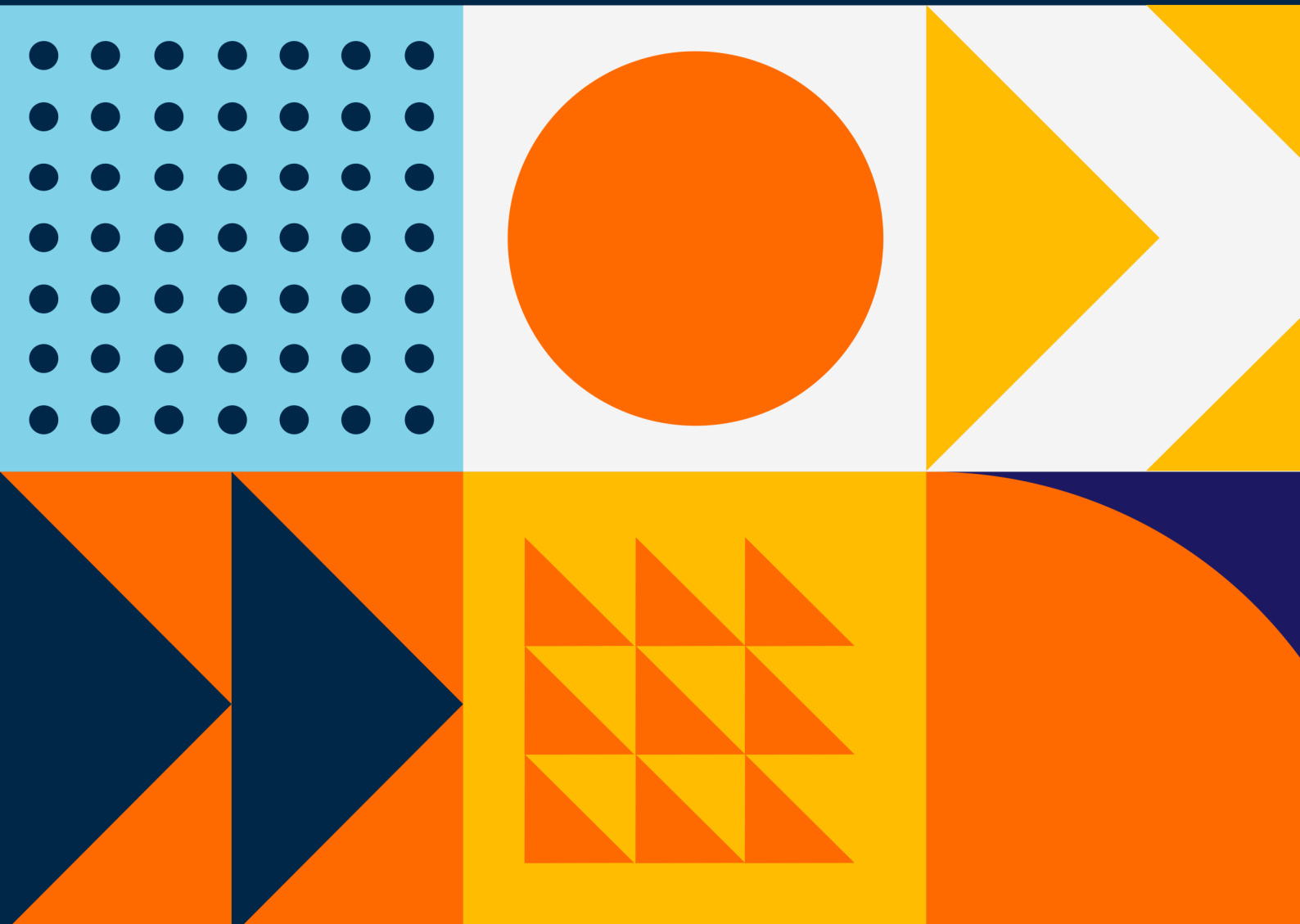




We do  to inspire.

**Project and Program Management:**

**PRINCE2® Foundation & Practitioner  
Certification Training**





About Us

# who we are.

Averest is one of the leading and fast-growing companies specialising in Information Technologies, Cyber Security, Cloud Computing, DevOps, Artificial Intelligence, Agile and Scrum, and Project Management, which is based in the United Kingdom and Turkey. Averest provides high-quality tech-accredited training and business solutions to its clients on these topics and more.



## Why You Should Learn With Us?

We offer accredited Programs that are available for anyone wishing to acquire skills and gain professional certification to take their career to the next level.

- **100+ Premium Programs**

Choose the appropriate program, date and region for your occupation.

- **50+ World-Wide Accredited Certifications**

Get certified by global certification bodies and deepen your expertise.

- **500+ Expert Advisors**

Get together with professional trainers who are experts in their professions.

- **100.000+ Professionals Trained**

We help many of the world's leading companies to build their tech and digital capabilities.

# Our partners.



To Explore More Please Visit [Our Website](#)

Program

# PRINCE2® Foundation & Practitioner Certification Training

## Overview

In PRINCE2® Foundation & Practitioner training offers participants an in-depth understanding and practical use of the PRINCE2® project management approach certification training course; you'll learn how to tailor projects based on the environment, develop a product-based planning approach for projects, control the use of resources, and effectively manage project risk.

## What You Will Learn?

- Understand the need for project management and a project management method.
- Understand the Principles, Themes and Processes used in PRINCE2® and how they are integrated.
- Understand how to practically apply PRINCE2® to projects.
- Prepare for the PRINCE2® Foundation and Practitioner examinations.

## Course Key Features

- Practice exams and prep questions
- After-course coaching available
- Exam voucher included

## Eligibility

PRINCE2® Foundation and Practitioner certification is designed for Project managers, Project leaders, Project coordinators, Programme and Operations Managers, and technical staff who need to comprehend how PRINCE2® operates.

Program

# PRINCE2® Foundation & Practitioner Certification Training

## Program Outline

### PRINCE2 Foundation & Practitioner Overview

- Objectives
- Benefits
- Scope
- Structure

### Planning

- Purpose and importance
- Components and levels of plan
- Planning techniques
- Product based planning
- The steps in planning

### Project organisation

- Organisational structure
- Roles and responsibilities
- The project board
- The project manager
- Team manager
- Project assurance
- Project support
- Supplier relationships

### Project control

- Work package authorisation
- Stage assessments
- Establish project & stage tolerance
- Checkpoints & highlight reports
- Handling exception situations
- Project issues
- Project reporting

Program

# PRINCE2® Foundation & Practitioner Certification Training

## Risk Management

- Understanding risk
- Risk Management Procedure
- The risk register

## Change Control

- Change control procedure
- Authority levels
- Analysing change

## PRINCE2® in practice

- Tailoring PRINCE2® for different business environments, including Agile
- Scaling PRINCE2® for use with projects of varying type and size
- Implementing PRINCE2® in an organisation
- Project documentation

## Quality

- Understanding quality
- Quality planning
- Product descriptions
- Quality control and quality review

## Processes

- Starting up and initiating a project
- Directing a project
- Managing stage boundaries
- Controlling a stage
- Managing product delivery
- Closing a project

Program

# PRINCE2® Foundation & Practitioner Certification Training

## Program Schedule

24-28 Oct 2022	-	<b>PRINCE2® Foundation &amp; Practitioner Certification Training</b> Online Instructor-Led , 09:00 - 16:00 , UTC +03:00
24-28 Oct 2022	Istanbul , Turkey	<b>PRINCE2® Foundation &amp; Practitioner Certification Training</b> In-Class , 09:00 - 16:00 , UTC +03:00
14-18 Nov 2022	City of London , United Kingdom	<b>PRINCE2® Foundation &amp; Practitioner Certification Training</b> In-Class , 09:00 - 16:00 , UTC +03:00
05-09 Dec 2022	-	<b>PRINCE2® Foundation &amp; Practitioner Certification Training</b> Online Instructor-Led , 09:00 - 16:00 , UTC +03:00
19-23 Dec 2022	Istanbul , Turkey	<b>PRINCE2® Foundation &amp; Practitioner Certification Training</b> In-Class , 09:00 - 16:00 , UTC +03:00



## LONDON

71-75 Shelton Street Covent Garden

London, United Kingdom WC2H 9JQ

+44 20 3967 83 79

## ISTANBUL

Merkez Mah. Abide-i Hürriyet Cad. Blackout A Blok Kat:1

No:64 Sisli, Istanbul, Turkey 34381

+90 534 551 20 88

[info@averesttraining.com](mailto:info@averesttraining.com)