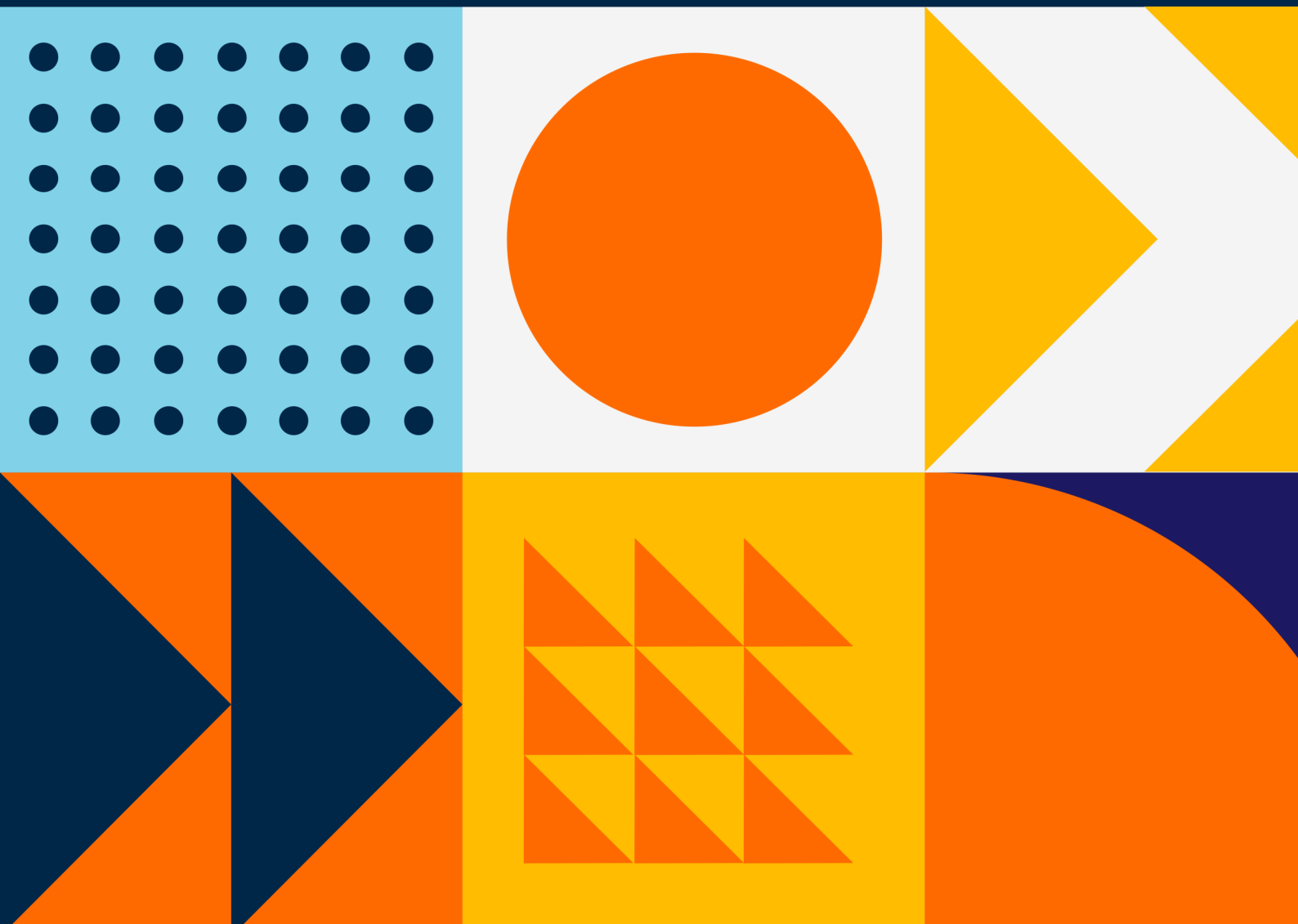




We do  to inspire.

Industry Certifications for IT & Management:

**Administering Microsoft SQL Server 2014
Databases M20462 Training Course**





About Us

who we are.

Averest is one of the leading and fast-growing companies specialising in Information Technologies, Cyber Security, Cloud Computing, DevOps, Artificial Intelligence, Agile and Scrum, and Project Management, which is based in the United Kingdom and Turkey. Averest provides high-quality tech-accredited training and business solutions to its clients on these topics and more.



Why You Should Learn With Us?

We offer accredited Programs that are available for anyone wishing to acquire skills and gain professional certification to take their career to the next level.

- **100+ Premium Programs**

Choose the appropriate program, date and region for your occupation.

- **50+ World-Wide Accredited Certifications**

Get certified by global certification bodies and deepen your expertise.

- **500+ Expert Advisors**

Get together with professional trainers who are experts in their professions.

- **100.000+ Professionals Trained**

We help many of the world's leading companies to build their tech and digital capabilities.

Our partners.



To Explore More Please Visit [Our Website](#)

Program

Administering Microsoft SQL Server 2014 Databases M20462 Training Course

Overview

At a time when data management could be what stands between business success and being overtaken by competitors, businesses are quick to recruit professionals with the capabilities to introduce a new, more desirable system into their organization. This Administering a SQL Database Infrastructure course equips professionals with the ability to do the same.

What You Will Learn?

- Install and configure
- Maintain instances and databases
- Optimise and troubleshoot
- Manage data
- Implement security
- Implement high availability

Course Key Features

- Train and study for the 70-462 Microsoft SQL Server examination. Microsoft exam preparation guidance, course materials and pre & post-course support.
- Accredited Microsoft Training provider as a Microsoft Learning Partner.

Eligibility

The primary audience for this course is individuals who administer and maintain SQL Server databases. These individuals perform database administration and maintenance as their immediate area of responsibility or work in environments where databases play a crucial role in their primary job. The secondary audiences for this course are individuals who develop applications that deliver content from SQL Server databases.

Program

Administering Microsoft SQL Server 2014 Databases M20462 Training Course

Program Outline

Module 1: SQL Server Security

- Authenticating Connections to SQL Server
- Authorizing Logins to Connect to databases
- Authorization Across Servers
- Partially Contained Databases
- Create Logins
- Create Database Users
- Correct Application Login Issues
- Configure Security for Restored Databases

Module 3: Authorizing Users to Access Resources

- Authorizing User Access to Objects
- Authorizing Users to Execute Code
- Configuring Permissions at the Schema Level
- Granting, Denying, and Revoking Permissions on Objects
- Granting EXECUTE Permissions on Code
- Granting Permissions at the Schema Level

Module 2: Assigning Server and Database Roles

- Working with server roles
- Working with Fixed Database Roles
- Assigning User-Defined Database Roles
- Assigning Server Roles
- Assigning Fixed Database Roles
- Assigning User-Defined Database Roles
- Verifying Security

Module 4: Protecting Data with Encryption and Auditing

- Options for auditing data access in SQL Server
- Implementing SQL Server Audit
- Managing SQL Server Audit
- Protecting Data with Encryption
- Working with SQL Server Audit
- Encrypt a Column as Always Encrypted
- Encrypt a Database using TDE

Program

Administering Microsoft SQL Server 2014 Databases M20462 Training Course

Module 5: Recovery Models and Backup Strategies

- Understanding Backup Strategies
- SQL Server Transaction Logs
- Planning Backup Strategies
- Plan a Backup Strategy
- Configure Database Recovery Models

Module 7: Restoring SQL Server 2016 Databases

- Understanding the Restore Process
- Restoring Databases
- Advanced Restore Scenarios
- Point-in-Time Recovery
- Restoring a Database Backup
- Restoring Database, Differential, and Transaction Log Backups
- Performing a Piecemeal Restore

Module 9: Configuring Security for SQL Server Agent

Module 6: Backing Up SQL Server Databases

- Backing Up Databases and Transaction Logs
- Managing Database Backups
- Advanced Database Options
- Backing Up Databases
- Performing Database, Differential, and Transaction Log Backups
- Performing a Partial Backup

Module 8: Automating SQL Server Management

- Automating SQL Server management
- Working with SQL Server Agent
- Managing SQL Server Agent Jobs
- Multi-server Management
- Create a SQL Server Agent Job
- Test a Job
- Schedule a Job
- Configure Master and Target Servers

Module 10: Monitoring SQL Server with Alerts and Notifications

Program

Administering Microsoft SQL Server 2014 Databases M20462 Training Course

- Understanding SQL Server Agent Security
- Configuring Credentials
- Configuring Proxy Accounts
- Analyzing Problems in SQL Server Agent
- Configuring a Credential
- Configuring a Proxy Account
- Configuring and testing the Security Context of a Job

- Monitoring SQL Server Errors
- Configuring Database Mail
- Operators, Alerts, and Notifications
- Alerts in Azure SQL Database
- Configuring Database Mail
- Configuring Operators
- Configuring Alerts and Notifications
- Testing Alerts and Notifications

Module 11: Introduction to Managing SQL Server by using PowerShell

- Getting Started with Windows PowerShell
- Configure SQL Server using PowerShell
- Administer and Maintain SQL Server with PowerShell
- Managing Azure SQL Databases using PowerShell
- Getting Started with PowerShell
- Using PowerShell to Change SQL Server settings

Module 13: Monitoring SQL Server

- Monitoring activity
- Capturing and Managing Performance Data
- Analyzing Collected Performance Data

Module 12: Tracing Access to SQL Server with Extended events

- Extended Events Core Concepts
- Working with Extended Events
- Using the System_Health Extended Events Session
- Tracking Page Splits Using Extended Events

Module 14: Troubleshooting SQL Server

- A Trouble Shooting Methodology for SQL Server
- Resolving Service Related Issues
- Resolving Connectivity and Log-in issues

Program

Administering Microsoft SQL Server 2014 Databases M20462 Training Course

- SQL Server Utility
- Troubleshoot and Resolve a SQL Login Issue
- Troubleshoot and Resolve a Service Issue
- Troubleshoot and Resolve a Windows Login Issue
- Troubleshoot and Resolve a Job Execution Issue
- Troubleshoot and Resolve a Performance Issue

Module 15: Importing and Exporting Data T

- Transferring Data to and from SQL Server
- Importing and Exporting Table Data
- Using bcp and BULK INSERT to Import Data
- Deploying and Upgrading Data-Tier Application
- Import and Excel Data Using the Import Wizard
- Import a Delimited Text File Using bcp
- Import a Delimited Text File using BULK INSERT
- Create and Test an SSIS Package to Extract Data
- Deploy a Data-Tier Application

Program

Administering Microsoft SQL Server 2014 Databases M20462 Training Course

Program Schedule



LONDON

71-75 Shelton Street Covent Garden

London, United Kingdom WC2H 9JQ

+44 20 3967 83 79

ISTANBUL

Merkez Mah. Abide-i Hürriyet Cad. Blackout A Blok Kat:1

No:64 Sisli, Istanbul, Turkey 34381

+90 534 551 20 88

info@averesttraining.com