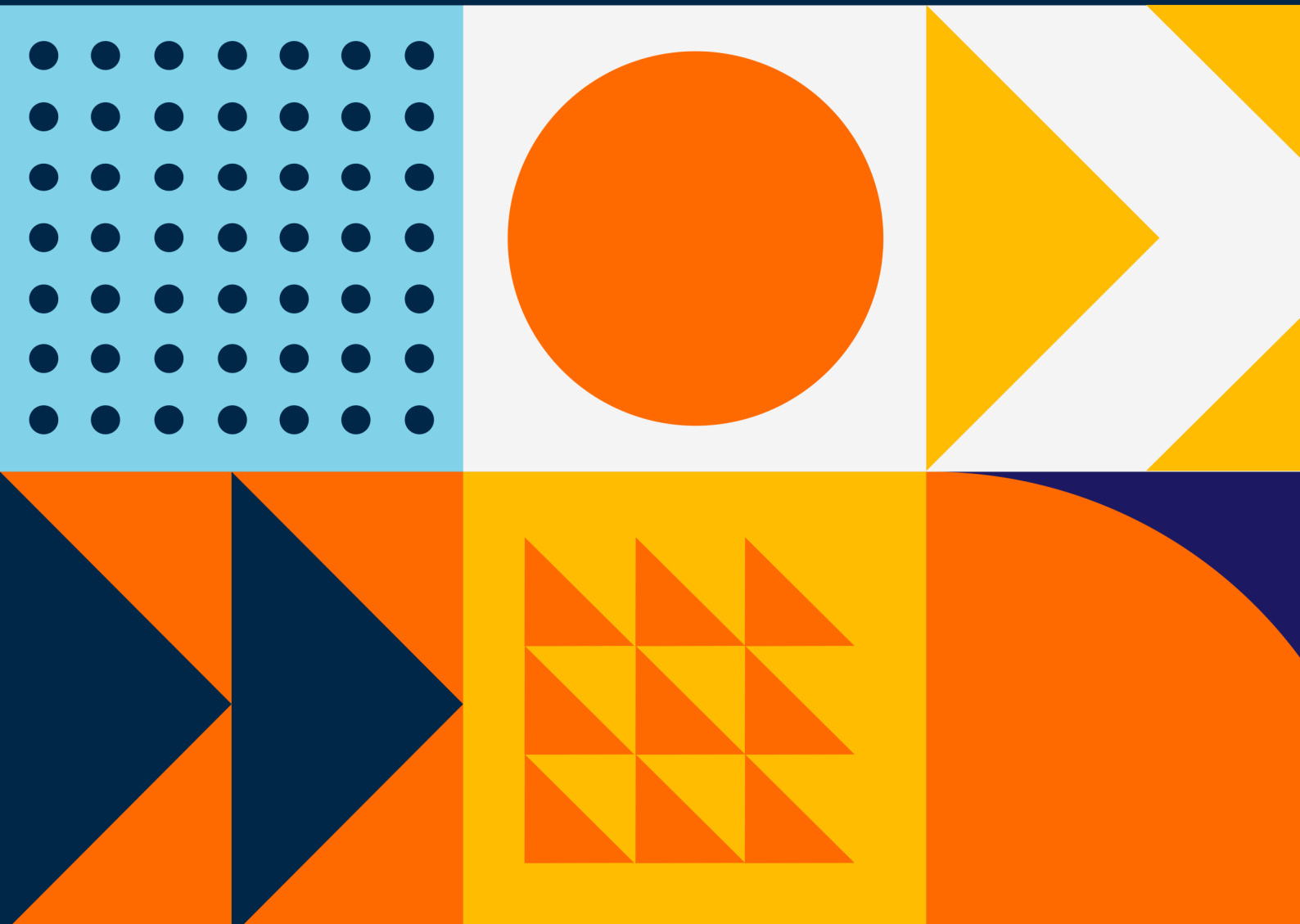




We do **IT**
to inspire.

IT Infrastructure and Networking:

CompTIA A+ Certification Training





About Us

who we are.

Averest is one of the leading and fast-growing companies specialising in Information Technologies, Cyber Security, Cloud Computing, DevOps, Artificial Intelligence, Agile and Scrum, and Project Management, which is based in the United Kingdom and Turkey. Averest provides high-quality tech-accredited training and business solutions to its clients on these topics and more.



Why You Should Learn With Us?

We offer accredited Programs that are available for anyone wishing to acquire skills and gain professional certification to take their career to the next level.

- **100+ Premium Programs**

Choose the appropriate program, date and region for your occupation.

- **50+ World-Wide Accredited Certifications**

Get certified by global certification bodies and deepen your expertise.

- **500+ Expert Advisors**

Get together with professional trainers who are experts in their professions.

- **100.000+ Professionals Trained**

We help many of the world's leading companies to build their tech and digital capabilities.

Our partners.



To Explore More Please Visit [Our Website](#)

Program

CompTIA A+ Certification Training

Overview

Learning the ins and outs of PC hardware and software is the focus of CompTIA A+ Certification Training. This training package includes a CompTIA A+ e-book, sample test questions, video lessons, and vouchers to take the official certification exam. The CompTIA A+ certification is the only one in the market that requires professionals to demonstrate their ability to think on their feet while performing essential IT support duties through performance testing. Employers all over the globe rely on it to find the best candidates for technical assistance and endpoint management positions. The CompTIA A+ certification is more widely seen in tech support job postings than any other IT credential.

What You Will Learn?

- Support basic IT infrastructure, including endpoint management, advanced device connectivity troubleshooting, and basic networking.
- Configure and support PC, mobile and IoT device hardware, including components, connectors and peripherals.
- Implement basic data backup and recovery methods and apply data storage and management best practices.
- Demonstrate baseline security skills for IT support professionals, including detecting and removing malware, addressing privacy concerns, physical security and device hardening.
- Configure device operating systems, including Windows, Mac, Linux, Chrome OS, Android and iOS. Also, administer client-based as well as cloud-based (SaaS) software.
- Troubleshoot and solve core service and support issues while implementing best practises for documentation, change management, and scripting in IT support.

Course Key Features

- Practice exam questions
- Exam voucher included
- After-course coaching available
- 29 CompTIA CEUs

Eligibility

Program

CompTIA A+ Certification Training

Entry-level IT Professionals in a technical support role.

Program

CompTIA A+ Certification Training

Program Outline

Supporting Operating Systems

- Identify Common Operating Systems
- Troubleshooting Methodology
- Use Windows Features and Tools
- Manage Files in Windows
- Manage Disks in Windows
- Manage Devices in Windows

Installing, Configuring and Troubleshooting Display and Multimedia Devices

- Install and Configure Display Devices
- Troubleshoot Display Devices
- Install and Configure Multimedia Devices

Installing, Configuring and Troubleshooting Internal System Components

- Install and Upgrade CPUs

Installing and Configuring PC Components

- Use Appropriate Safety Procedures
- PC Components
- Common Connection Interfaces
- Install Peripheral Devices

Installing, Configuring and Troubleshooting Storage Devices

- Install System Memory
- Install and Configure Mass Storage Devices
- Install and Configure Removable Storage
- Configure RAID
- Troubleshoot Storage Devices

Installing, Configuring and Maintaining Operating Systems

- Configure and Use Linux

Program

CompTIA A+ Certification Training

- Configure and Update BIOS/UEFI
- Install Power Supplies
- Troubleshoot Internal System Components
- Configure a Custom PC

Maintaining and Troubleshooting Microsoft Windows

- Install and Manage Windows Applications
- Manage Windows Performance
- Troubleshoot Windows

Configuring and Troubleshooting Networks

- Configure Network Connection Settings
- Install and Configure SOHO Networks
- Configure SOHO Network Security
- Configure Remote Access
- Troubleshoot Network Connections
- Install and configure IoT Devices

- Configure and Use macOS
- Install and Upgrade Operating Systems
- Maintain OSs

Network Infrastructure Concepts

- Wired Networks
- Network Hardware Devices
- Wireless Networks
- Internet Connection Types
- Network Configuration Concepts
- Network Services

Managing Users, Workstations and Shared Resources

- Manage Users
- Configure Shared Resources
- Configure Active Directory Accounts and Policies

Program

CompTIA A+ Certification Training

Implementing Client Virtualization and Cloud Computing

- Configure Client-Side Virtualization
- Cloud Computing Concepts

Securing Workstations and Data

- Implement Security Best Practices
- Implement Data Protection Policies
- Protect Data During Incident Response

Supporting and Troubleshooting Laptops

- Use Laptop Features
- Install and Configure Laptop Hardware
- Troubleshoot Common Laptop Issues

Installing, Configuring and Troubleshooting Print Devices

- Maintain Laser Printers

Security Concepts

- Logical Security Concepts
- Threat and Vulnerabilities
- Physical Security Measures

Troubleshooting Workstation Security Issues

- Detect, Remove and Prevent Malware
- Troubleshoot Common Workstation Security Issues

Supporting and Troubleshooting Mobile Devices

- Mobile Device Types
- Connect and Configure Mobile Device Accessories
- Configure Mobile Device Network Connectivity
- Support Mobile Apps
- Secure Mobile Devices
- Troubleshoot Mobile Device Issues

Implementing Operational Procedures

- Environmental Impacts and Controls

Program

CompTIA A+ Certification Training

- Maintain Inkjet Printers
- Maintain Impact, Thermal and 3D Printers
- Install and Configure Printers
- Troubleshoot Print Device Issues
- Install and Configure Imaging Devices
- Create and Maintain Documentation
- Use Basic Change Management Best Practices
- Implement Disaster Prevention and Recovery Methods
- Basic Scripting Concepts
- Professionalism and Communication

Program

CompTIA A+ Certification Training

Program Schedule

10-14 Oct 2022	-	CompTIA A+ Certification Training Online Instructor-Led , 09:00 - 16:00 , UTC +03:00
17-21 Oct 2022	-	CompTIA A+ Certification Training Online Instructor-Led , 09:00 - 16:00 , UTC +03:00
07-11 Nov 2022	Istanbul , Turkey	CompTIA A+ Certification Training In-Class , 09:00 - 16:00 , UTC +03:00
21-25 Nov 2022	City of London , United Kingdom	CompTIA A+ Certification Training In-Class , 09:00 - 16:00 , UTC +03:00
12-16 Dec 2022	Istanbul , Turkey	CompTIA A+ Certification Training In-Class , 09:00 - 16:00 , UTC +03:00



LONDON

71-75 Shelton Street Covent Garden

London, United Kingdom WC2H 9JQ

+44 20 3967 83 79

ISTANBUL

Merkez Mah. Abide-i Hürriyet Cad. Blackout A Blok Kat:1

No:64 Sisli, Istanbul, Turkey 34381

+90 534 551 20 88

info@averesttraining.com