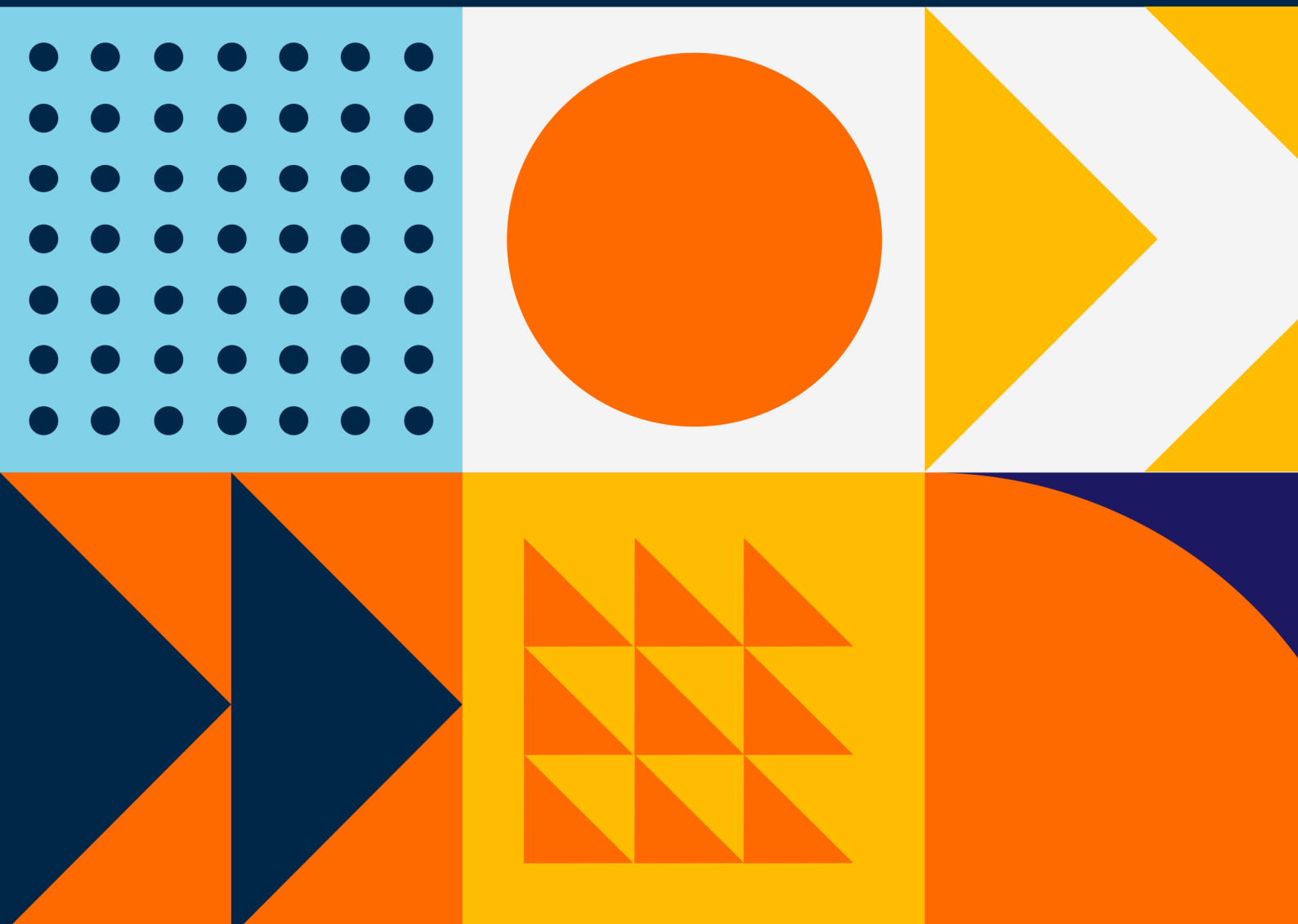




We do **IT**
to inspire.

Cloud Computing:

Microsoft Azure Fundamentals



Our partners.



To Explore More Please Visit [Our Website](#)

Program

Microsoft Azure Fundamentals

Overview

Microsoft Azure Fundamentals course covers cloud principles, essential Azure services, security, privacy, compliance and trust, and Azure pricing and support. Please remember that this course includes an Azure pass and time for students to engage in hands-on labs. Consider the AZ-900T01: Microsoft Azure Fundamentals (1 day) method if you do not require hands-on experience. Both courses' material corresponds to the AZ-900 test goal.

What You Will Learn?

- Define cloud computing and its key advantages
- Explain public, private, and hybrid cloud models
- Explain IaaS, PaaS, and SaaS cloud services
- Identify core Azure architectural components, such as regions, geographies, and resource groups.
- Identify usage cases for Azure core services and products, such as virtual machines and storage.
- Identify usage cases for Azure solutions, such as the Internet of Things and machine learning.
- Identify available Azure management tools, such as Azure PowerShell and the CLI.
- Describe virtual network security connectivity options, such as network security groups
- Describe Azure identity authentication and authorization options
- Describe use cases for the security centre, key vault, threat and information protection options
- Describe Azure policies and role-based access control
- Describe use cases for Azure Monitor and Azure Service Health

Course Key Features

- Microsoft Official Course content
- Hands-on learning labs included
- Industry recognized course completion certificate
- 24 * 7 support with dedicated mentoring sessions

Program

Microsoft Azure Fundamentals

- Describe privacy, compliance, and data protection standards
- Use an Azure subscription
- Plan and manage costs
- Explain Azure support options
- Describe Azure SLAs
- Explain Azure service lifecycles

Eligibility

Microsoft Azure Fundamentals Training is designed for students who are just beginning to study cloud computing and how Microsoft Azure delivers this service. This course is appropriate for technical and non-technical cloud professionals who want an overview of Azure products and services. Due to the hands-on component, this course is better suited for technical students who need to establish services in the Azure portal. It may proceed to role-based courses and certifications such as Azure Administrator.

Program

Microsoft Azure Fundamentals

Program Outline

Describe core Azure concepts

- Introduction to Azure fundamentals
- Discuss Azure fundamental concepts
- Describe core Azure architectural components

Describe core solutions and management tools on Azure

- Choose the best AI service for your needs.
- Choose the best tools to help organizations build better solutions
- Choose the best monitoring service for visibility, insight, and outage mitigation
- Choose the best tools for managing and configuring your Azure environment
- Choose the best Azure serverless technology for your business scenario
- Choose the best Azure IoT service for your application

Describe identity, governance, privacy, and compliance features

Describe core Azure services

- Explore Azure database and analytics services
- Explore Azure compute services
- Explore Azure Storage services
- Explore Azure networking services

Describe general security and network security features

- Protect against security threats on Azure
- Secure network connectivity on Azure

Describe Azure cost management and service level agreements

Program

Microsoft Azure Fundamentals

- Secure access to your applications by using Azure identity services
- Build a cloud governance strategy on Azure
- Examine privacy, compliance, and data protection standards on Azure
- Plan and manage your Azure costs
- Choose the right Azure services by examining SLAs and service lifecycle.

Program

Microsoft Azure Fundamentals

Program Schedule



LONDON

71-75 Shelton Street Covent Garden
London, United Kingdom WC2H 9JQ
+44 20 3967 83 79

ISTANBUL

Merkez Mah. Abide-i Hürriyet Cad. Blackout A Blok Kat:1
No:64 Sisli, Istanbul, Turkey 34381
+90 534 551 20 88
info@averesttraining.com